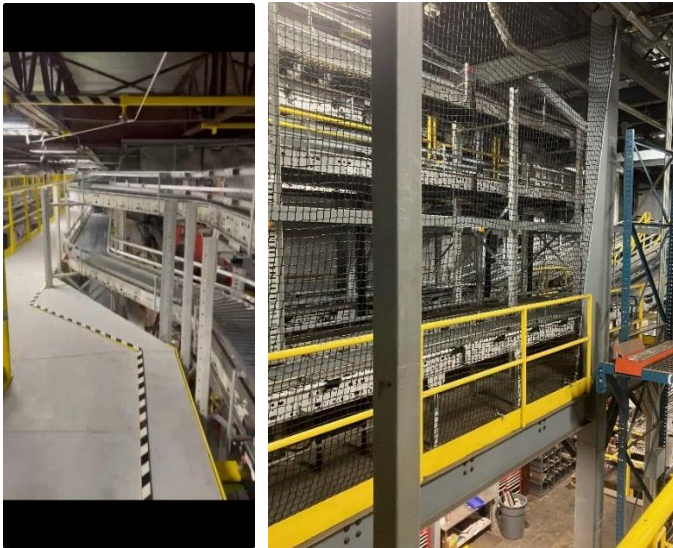




April 2, 2024

I hope everyone survived the New Year. SES enjoyed a good first year in business in 2023, mostly due to the support of the PMG-Safety group. Due to the nature of the projects we pursue, capital funding is required and as you know, it takes time to build a backlog of projects. I believe we are now there where we can see some consistent results from our efforts. I sincerely look forward to a prosperous 2024 with your continued support.



SES was contracted to install a series of fall protection systems at a food distribution center in Topeka, KS. The pictures to the left show a horizontal lifeline system for an exposed walkway, a custom access platform for safe access to the conveyor system and a netting system that provides fall protection from this elevated platform.

The pictures to the right show a "RoofSaver". The RoofSaver is unique in that it anchors to roof purlins as a 'structural member'. Roof purlins have never been used as structural members in the past and makes anchoring our fall protection system much easier to Pre-engineered Metal Buildings. These RoofSavers can be designed for one or two users and can be utilized to support rigid rail or enclosed track systems as well.



HAVE A SAFE DAY!

Bruce Duden

651.600.2621 mobile
bruced@safetyengineered

Justan Duden

612.513.5177 mobile
justand@safetyengineeredsystems.com

